

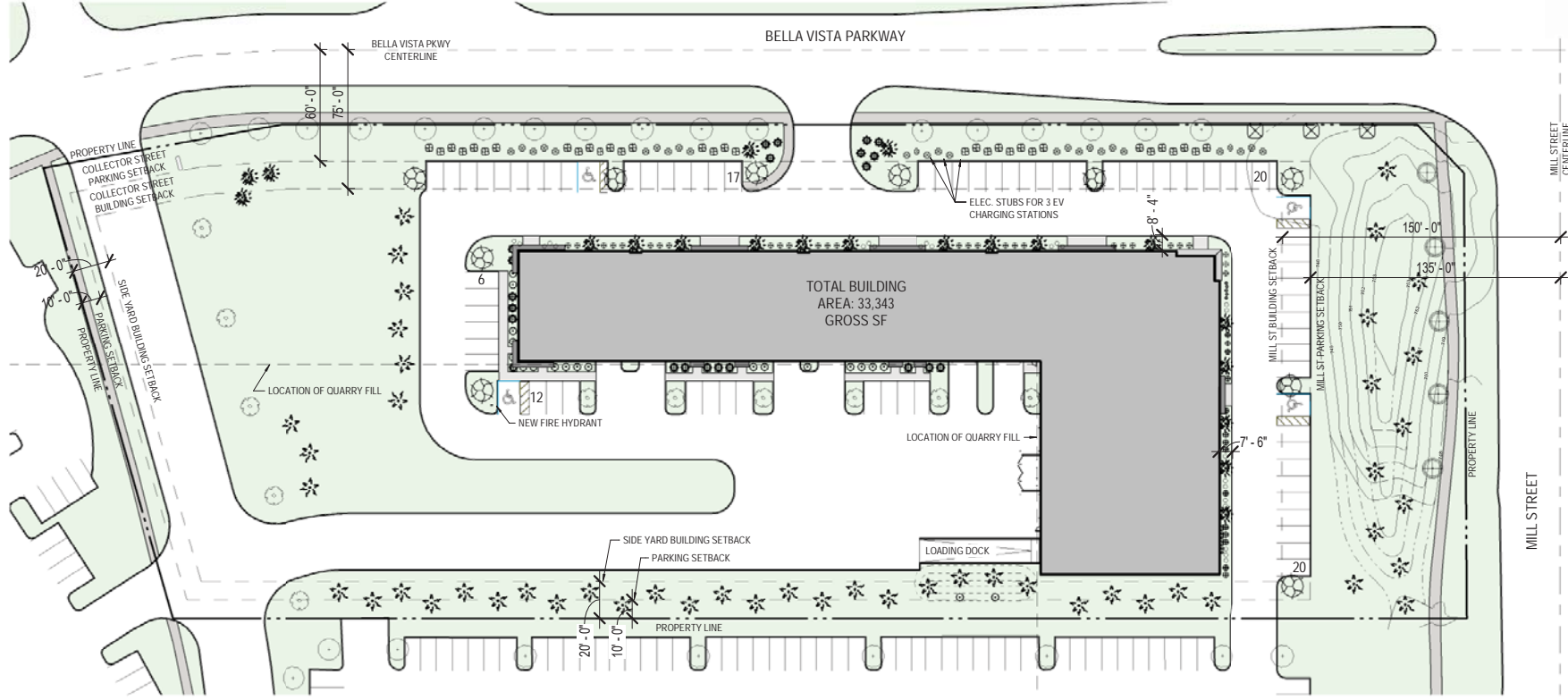
SITE PLAN

ZONING INFORMATION
<ul style="list-style-type: none"> CITY ZONING: SD - SPECIAL DEVELOPMENT DISTRICT (CITY OF WARRENVILLE ZONING MAP) CANTERA ZONING: SUBAREA F PER CANTERA DCR EXHIBIT A FLOOR AREA RATIO: 0.5 PER CANTERA DCR APPENDIX H MAXIMUM BUILDING HEIGHT: 225' PER CANTERA DCR APPENDIX E BUILDING SETBACK REQUIREMENTS: <ol style="list-style-type: none"> MILL STREET (FRONT): 150' BUILDING SETBACK PER CANTERA DCR APPENDIX E COLLECTOR STREET: 75' BUILDING SETBACK PER CANTERA DCR SECTION 5.C SIDE AND REAR YARD: 20' PER CANTERA DCR SECTION 5.C PARKING SETBACK REQUIREMENTS: <ol style="list-style-type: none"> MILL STREET (FRONT): 135' PARKING SETBACK PER CANTERA DCR APPENDIX E COLLECTOR STREET: 60' PARKING SETBACK SIDE AND REAR YARD: 10' PER CANTERA DCR SECTION 5.C

PARKING REQUIREMENTS
PER CANTERA DEVELOPMENT CONTROL REGULATIONS - APPENDIX F - PAGES 81-82: INDUSTRIAL/WAREHOUSE: TWO (2) SPACES PER 1,000 SQUARE FEET UP TO 10,000 SQUARE FEET AND ONE (1) SPACE PER 1,000 SQUARE FEET THEREAFTER. OFFICE: FOUR (4) SPACES PER 1,000 SQUARE FEET UP TO 30,000 SQUARE FEET.

PARKING CALCULATIONS
33,343 SF X 90% AREA FOR WAREHOUSE USE= 30,009 SF 33,343 SF X 10% AREA FOR OFFICE USE = 3,334 SF WAREHOUSE: 30,009/1,000 X 2 = 60 = 60 PARKING SPACES REQUIRED OFFICE: 3,334 SF/1,000 X 4 = 14 = 14 PARKING SPACES REQUIRED = 74 TOTAL PARKING SPACES REQUIRED 75 PARKING SPACES PROVIDED

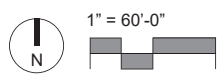
LANDSCAPE REQUIREMENTS (CANTERA DCR SECTION 5.C)
THE MINIMUM LANDSCAPE COVERAGE SHALL NOT BE LESS THAN 40% OF THE LOT AREA PROVIDED THAT "ACCESSORY OFF-SITE LANDSCAPE AREA" CAN BE USED AS LANDSCAPE COVERAGE AREA TOWARD UP TO ONE-HALF THE REQUIRED MINIMUM LANDSCAPED AREA, AS DESCRIBED IN APPENDIX G. "ACCESSORY OFF-SITE LANDSCAPE AREA" IRRIGATION TO BE PROVIDED AT LANDSCAPED AREAS ALONG MILL AND BELLA VISTA, AND FRONT AND CORNER YARD LANDSCAPED AREAS PER CANTERA DCR V.LC.6



PLANTING LEGEND	
TREES	
	EXISTING TREES TO REMAIN
	AMERICAN ARBORVITAE (TO) <i>(Thuja occidentalis)</i> 21 TREES (Min. 6" ht.)
	SUGAR MAPLE (AS) <i>(Acer saccharum "Sugar Maple")</i> 3 TREES (Min. 3" cal.)
	PAGODA DOWOOD (PD) <i>(Cornus alternifolia)</i> 3 TREES (Min. 3" cal.)
	GINKGO (GB) - male only <i>(Ginkgo biloba)</i> 3 TREES (Min. 3" cal.)
	COLORADO SPRUCE TREE (SPR) <i>(Picea purgense)</i> 12 TREES (Min. 9" ht.)
	LITTLELEAF LINDEN (TC) <i>(Tilia cordata)</i> 6 TREES (Min. 3" cal.)
	RED OAK (QR) <i>(Quercus rubra)</i> 6 TREES (Min. 3" cal.)
SHRUBS	
	SHOW OFF FORSYTHIA (SO) <i>(Forsythia x Mindor)</i> 35 shrubs (Min. 30" dia.)
	AUTUMN JAZZ ARROWWOOD VIBURNUM (AJ) <i>(Viburnum dentatum "Ralph Senior")</i> 11 shrubs (Min. 30" dia.)
	ROSE WEIGELA (WF) <i>(Weigela florida)</i> 22 shrubs (Min. 30" dia.)
	KOREAN SPICE VIBURNUM (VC) <i>(Viburnum carlesii)</i> 35 shrubs (Min. 30" dia.)
	VANHOUTTE SPIREA (VS) <i>(Spirea x vanhouttei)</i> 6 shrubs (Min. 30" dia.)
	MUGO PINE (PM) <i>(Pinus mugo mugo)</i> 20 shrubs (Min. 30" dia.)
PERENNIALS, GRASSES & GROUND COVERS	
	ROCK SPRAY COTONEASTER (CH) <i>(Cotoneaster horizontalis)</i> 17 shrubs
	BIG BLUESTEM (AG) <i>(Andropogon gerardii)</i> 20 plants @ 24" centers



OKW ARCHITECTS
600 W. Jackson, Suite 250
Chicago, IL 60661



BELLA VISTA LOGISTICS FACILITY
27501 BELLA VISTA PARKWAY
WARRENVILLE, IL
JANUARY 26, 2023 Project #: 22028