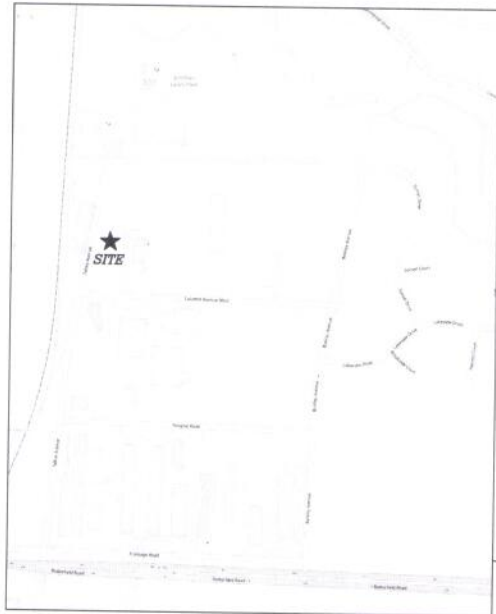
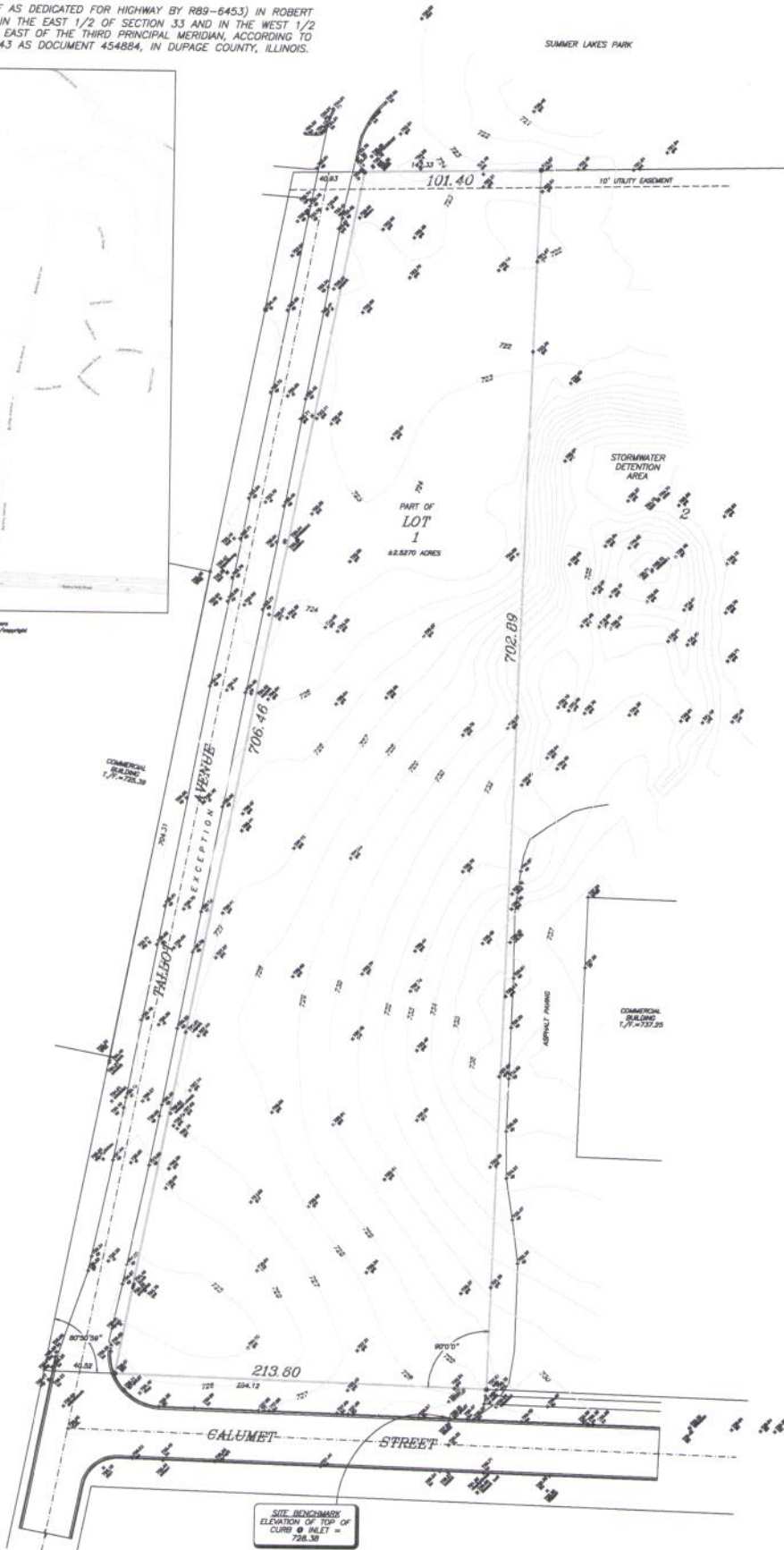


A.L.T.A. / A.C.S.M. LAND TITLE SURVEY

OF
 LOT 1 (EXCEPT THE WESTERLY 40 FEET THEREOF AS DEDICATED FOR HIGHWAY BY R89-6453) IN ROBERT BARTLETT'S GREEN ACRES, BEING A SUBDIVISION IN THE EAST 1/2 OF SECTION 33 AND IN THE WEST 1/2 OF SECTION 34, TOWNSHIP 33 NORTH, RANGE 9 EAST OF THE THIRD PRINCIPAL MERIDIAN, ACCORDING TO THE PLAT THEREOF RECORDED OCTOBER 20, 1943 AS DOCUMENT 454884, IN DUPAGE COUNTY, ILLINOIS.



VICINITY MAP
 © GeoInformation Systems
<http://www.geoinformation.org/vicinitymap>



ORDERED BY: TOP DEVELOPMENT
 STATE OF ILLINOIS IN & S. COUNTY OF KENDALL TO CHARGED TITLE INSURANCE COMPANY TOP DEVELOPMENT
 THIS IS TO CERTIFY THAT THIS MAP OR PLAN AND THE SURVEY ON WHICH IT IS BASED WERE MADE IN ACCORDANCE WITH THE 2014 UNIFORM ESTATEMENT OF WORK REQUIREMENTS FOR ALIENATION LAND TITLE SURVEYS, JOINTLY ESTABLISHED AND ADOPTED BY ALTA AND NPLA, AND INCLUDES SEAS 1, 4, 5 AND 8 OF RULE 4. THEREOF. THE FIELD WORK WAS COMPLETED ON THIS 28th DAY OF NOVEMBER, A. D., 2014.
 LICENSE LAW NUMBER 767.3175
 (LICENSE SUBJECT TO REVIEWS AND OPINIONS 11/20/2020)
 NOTICE TO USER OR SUBMITTER: POLICY FOR RESTRICTIONS NOT SHOWN ON SURVEY.
 ALL DIMENSIONS AND SECTIONS IN FEET AND DECIMALS THEREOF.
 LINE DIRECTIONS AND BEARINGS, WHEN SHOWN, ARE BASED ON AN ASSUMED DATUM LINE.
 PLEASE COMPAKE ALL POINTS BEFORE BUILDING AND REPORT ANY OBSERVED DISCREPANCIES.



ORDER NO. 22.E.22
 FILE NO. 18965
 1/25/2014
 1"=40'
 0" = 1/4" (1/4" = 1/16")
 1" = 1/4" (1/4" = 1/16")
 1" = 1/4" (1/4" = 1/16")
 1" = 1/4" (1/4" = 1/16")

REFERENCE BENCHMARK:
 DUPAGE COUNTY GEODETIC SURVEY MONUMENT
 BENCHMARK #154012 RESET
 P.D. DPO266, NORTHING 1877110, EASTING 1022479,
 ELEVATION 724.27 NAVD 83
 BRASS TABLET IN S.E. CORNER OF ROUTE 56 BRIDGE
 OVER CREEK 0.5 MILES EAST OF ROUTE 59

WILLIAM M. WINGSTEDT
 ILLINOIS PROFESSIONAL LAND SURVEYOR
 328 WHITE PINE CT., OSWEGO, ILLINOIS 60543
 PHONE (630) 594-9029 FAX (630) 591-1207