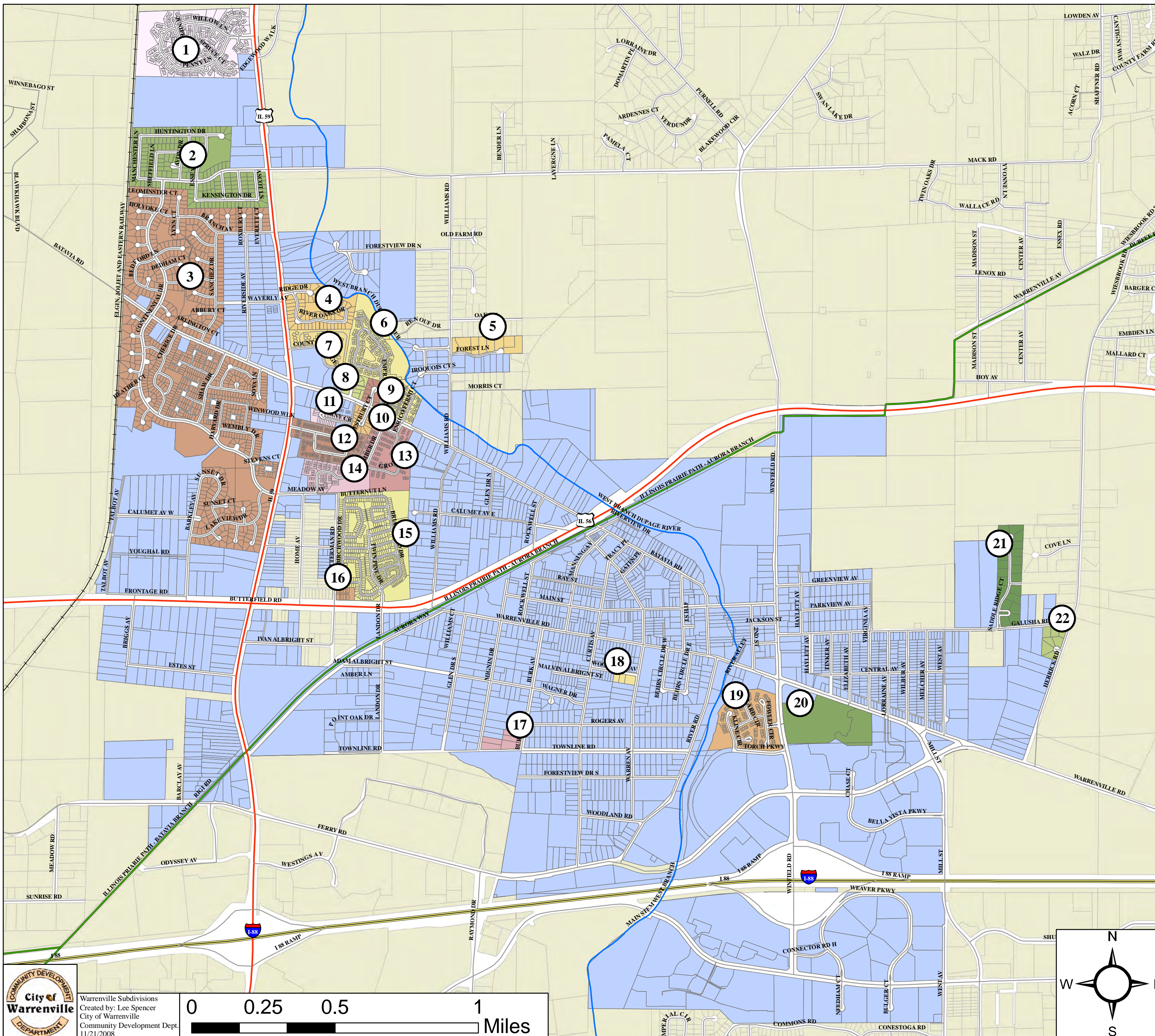



# CITY OF WARRENVILLE

## Residential Subdivisions



- 1 Maple Hill - Approved on 11/7/1988 (See Council Minutes and Ordinance 689). 292 single family units. Zoned R-3: Medium Density Single Family Residential.
- 2 Fox Hollow - Approved on 4/2/1985 (See Ordinance 755). 190 single family units. Zoned R-3 Medium Density Single Family Residential.
- 3 Summerlakes - Approved 3/6/1984 (See Ordinance 688) 926 single family units. Zoned R-3: Medium Density Single Family Residential.
- 4 River Oaks - Approved on 4/1/1985 (See Ordinance 756). 66 single family units. Zoned R-3: Medium Density Single Family Residential.
- 5 Williams Woods - Approved on 12/18/1996 (See Ordinance 1546). 5 single family units. Zoned R-1: Low Density Single Family Residential.
- 6 Emerald Green - Approved on 1/15/1973 (See Council Minutes). 298 single family condominiums. Zoned R-3: Medium Density Single Family Residential.
- 7 Country Ridge - Approved on 1/5/1981 (See Council Minutes). 192 multi-family units. Zoned R-3 Medium Density Single Family Residential.
- 8 Maple Terrace - Approved on 8/20/2003 (See Ordinance 2086). 12 single family units. Zoned R3: Medium Density Single Family Residential.
- 9 Robyn - Approved 6/6/1994 (See Ordinances 1333 and 1525). 8 single family residential units. Zoned R-3: Medium Density Single Family Residential.
- 10 Westbury - Approved on 1/21/1995 (See Ordinance 1413). 16 single family units. Zoned R-5: High Density Single Family Residential.
- 11 Cerny Circle - Approved on 5/6/2003 (See Ordinance 2056). 21 single family townhomes. Zoned R-4: Medium High Density Single Family Residential.
- 12 Winchester Circle - Approved 5/15/1972 (See Ordinance 113). 276 single family units. Zoned R-3: Medium Density Single Family Residential.
- 13 Warrenville Lakes - Approved on 10/6/1986 (See Council Minutes and Ordinance 836). 172 single family attached units. Zoned R-3 Medium Density Single Family Residential.
- 14 Timber Creek - Approved on 9/6/1988 (See Ordinance 989). 92 multi-family attached units. Zoned R-6 Multi-Family Residential.
- 15 Thornwilde - Approved 2/20/1973 (See Council Minutes). 473 single family units. Zoned R-3: Medium Density Single Family Residential.
- 16 Lynnwood - Approved on 2/23/2001 (See Ordinance 1895). 12 Multi-family townhomes. Zoned R-6: Multi-Family Residential.
- 17 Oluf's - Approved on 7/5/2002 (See Ordinance 1994). 5 single family units. Zoned R-2: Medium-Low Density Single Family Residential.
- 18 La Jolla - Approved on 2/6/2002 (See Ordinance 1962). 3 single family units. Zoned R-2: Medium Low Density Single Family Residential.
- 19 Cantera Village - Approved on 11/20/1995 (See Council Minutes). 100 townhomes. Zoned S-D: Special Development District.
- 20 Village Green - Approved on 11/16/1995 (See Council Minutes and Ordinance 1443). 344 residential apartment units. Zoned S-D: Special Development District.
- 21 Saddle Ridge - Approved on 6/19/2000 (See Ordinance 1851). 19 single family units. Zoned R1- A: Low Density/ Semi-Urban Single Family Residential.
- 22 Herrick Hills - Approved on 10/12/2001 (See Ordinance 1938). 6 single family units. Zoned R-1A: Low Density/ Semi-Urban Single Family Residential.

City of Warrenville Limits


 Warrenville Subdivisions  
 Created by: Lee Spencer  
 City of Warrenville  
 Community Development Dept.  
 11/21/2008

0 0.25 0.5 1 Miles  
